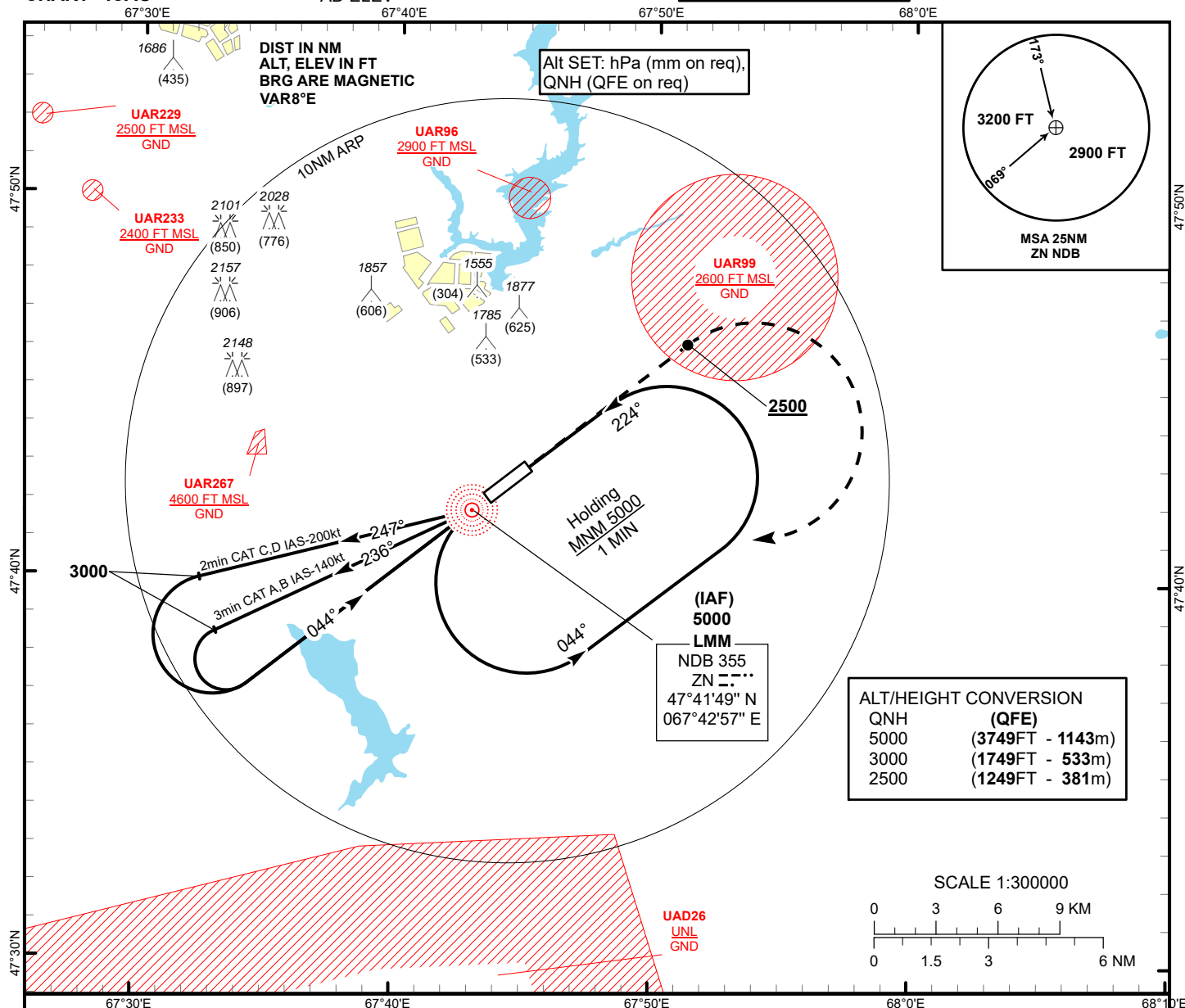


INSTRUMENT  
APPROACH  
CHART - ICAO

AERODROME ELEV 1251 FT  
HEIGHTS RELATED TO  
AD ELEV

ZHEZKAZGAN TOWER 127.1  
ZHEZKAZGAN ATIS (EN) 131.4  
ZHEZKAZGAN ATIS (RU) 122.4

ZHEZKAZGAN  
NDB  
RWY 04



TRANSITION ALT  
10000

IAF  
5000

MISSED APPROACH

Climb on track 044° to 2500 or above,  
after passing ZN maintain 044° for 1 min 20 sec,  
then turn RIGHT to ZN.  
Climb initially to 3000, then as directed.  
RADIO FAILURE:  
In the case of RCF  
climb to 5000 to ZN  
and join to holding pattern.  
Missed approach turn speed  
limited to 250kt maximum.

ELEV 1251  
THR RWY 04

Aircraft Category		A	B	C	D
Straight-in Approach OCA/H	NDB	1580(330)	1580(330)	1580(330)	1580(330)
Aerodrome Operating Minima MDH ft x RVR (CMV)					
NDB					

ZHEZKAZGAN  
NDB

AERONAUTICAL DATA TABULATION

NDB approach to RWY04 from NDB ZN	
Fix/point	Coordinates
LMM NDB ZN	47° 41' 48.7"N 067° 42' 56.9"E
THR RWY04	47° 42' 06.51"N 067° 43' 29.14"E